

Using IWH research at school

Institute for Work & Health (IWH) resources can help post-secondary students and instructors in occupational health and safety (OHS), disability management, return to work (RTW) and/or work injury rehabilitation incorporate evidence-based information into their research projects, essays, presentations, lessons and lectures.



IWH Journal Articles

This searchable database includes over 1,000 (and growing) abstracts—and, sometimes, access to full papers—of peer-reviewed journal articles, reports, books and book chapters authored or co-authored by IWH scientists and researchers, who are leading experts in the field of work injury and disability prevention.

www.iwh.on.ca/biblio



What Researchers Mean By ...

Taken from a popular column in IWH's newsletter *At Work*, this series explains often-complex research terms in plain language. From "confounding variables" to "statistical significance," the series explains over 30 terms that you may come upon when reading journal articles and other research material.

www.iwh.on.ca/what-researchers-mean-by



Research Alerts

These weekly alerts offer one-stop access to the latest English-language abstracts on work and health research. The abstracts included each week are chosen by IWH's library team because of their relevance to occupational health and safety, return to work, workers' compensation and other research areas within IWH's mandate.

www.iwh.on.ca/research-alerts



Fellowship Opportunities

IWH offers two fellowship opportunities for students who plan to continue in academia. The Leonard Syme Training Fellowship in Work and Health is designed for new researchers at the master's or doctoral level intending to study work and health. The Mustard Fellowship is designed to support innovative multidisciplinary research among new investigators.

www.iwh.on.ca/student-opportunities



Research Highlights

These easy-to-read summaries communicate the findings of IWH studies that have been published in peer-reviewed journals. Each summary presents a plain-language overview of the highlights, context, methodology, findings and implications of the study in question.

www.iwh.on.ca/research-highlights



YouTube

The IWH YouTube channel provides visual access to workplace health, safety and disability prevention research, from short videos of IWH scientists talking about their findings to slidecasts of IWH plenaries (seminars) in which experts from IWH and other research/academic institutions share their findings in detail.

www.youtube.com/iwhresearch



Twitter

IWH tweets almost daily about research findings and events related to workplace injury and disability prevention, with embedded links to learn more. This allows you to keep up on trending research from Ontario, Canada and internationally.

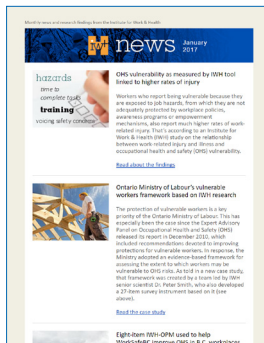
www.twitter.com/iwhresearch



LinkedIn

Important news about IWH research findings, events, publication releases and more are shared on our LinkedIn page.

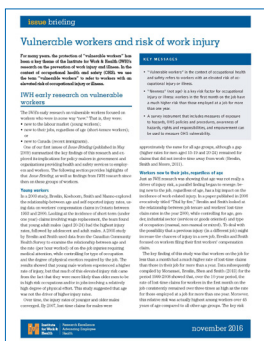
www.linkedin.com/company/institute-for-work-and-health



IWH News

IWH News, a monthly e-alert, features short and easy-to-read items that keep you abreast of our newest research findings, publications, events, tools, scientist achievements and more, with web links that let you find out more.

www.iwh.on.ca/iwh-news



Issue Briefing

Using findings from IWH and elsewhere, *Issue Briefing* summarizes, in plain language, research on topics of interest to policy-makers in health, safety, disability and/or workers' compensation. Where appropriate, the newsletter also explores the policy implications of the research.

www.iwh.on.ca/issue-briefings



Plenaries

IWH hosts regular one-hour seminars in Toronto (typically on a Tuesday at 11:00 a.m.) at which IWH and other researchers discuss emerging findings in injury and disability prevention. If you're unable to attend, you can watch and listen to the slidecast later.

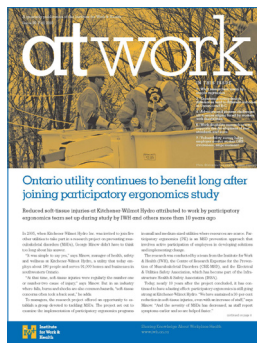
www.iwh.on.ca/plenaries



Annual Lecture

The annual Alf Nachemson Memorial Lecture, held in the fall, features a prominent national or international researcher whose research work has made a difference to OHS, RTW and/or workers' compensation decision-making.

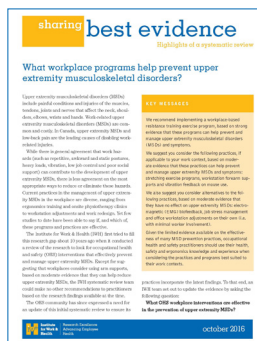
www.iwh.on.ca/nachemson-lecture



At Work

At Work, IWH's quarterly newsletter, includes engaging articles reporting on our latest research findings. It focuses on injury prevention, return to work, workers' compensation policies and other information that affects workers and informs workplace decision-makers.

www.iwh.on.ca/at-work



Sharing Best Evidence

Each issue of *Sharing Best Evidence* provides a quick overview of what the research says on a specific OHS or RTW issue. Based on systematic reviews by IWH, each report summarizes the findings from better quality studies that help answer a particular question—and suggests how you can use these findings in the real world of work.

www.iwh.on.ca/sharing-best-evidence



Tools and Guides

For those who finish their schooling and find themselves on the front lines of work injury and disability prevention, whether in a workplace, union, government body or other organization, IWH offers numerous tools and guides that ensure policies and practices are evidence-based. These include guides on:

- leading indicators to improve OHS performance and prevent work injury and illness;
- reducing musculoskeletal disorders in the workplace;
- identifying and solving return-to-work problems;
- teaching newcomers about their OHS rights and responsibilities.

Over 20 tools and guides are available.

www.iwh.on.ca/products

STAY CURRENT

Sign up for IWH News, At Work, plenaries and more:
www.iwh.on.ca/e-alerts

Follow us on Twitter:
www.twitter.com/iwhresearch

Connect with us on LinkedIn:
www.linkedin.com/company/institute-for-work-and-health

Subscribe to our YouTube channel:
www.youtube.com/iwhresearch

**Institute
for Work &
Health**

Research Excellence
Advancing Employee
Health

The Institute for Work & Health is an independent, not-for-profit research organization that promotes, protects and improves the safety and health of working people by conducting actionable research that is valued by employers, workers and policy-makers.

The Institute for Work & Health operates with support from the Province of Ontario.

For more information, please contact: info@iwh.on.ca

© January 2017, Institute for Work & Health
481 University Ave., Suite 800
Toronto, ON M5G 2E9 CANADA
www.iwh.on.ca